



People / members

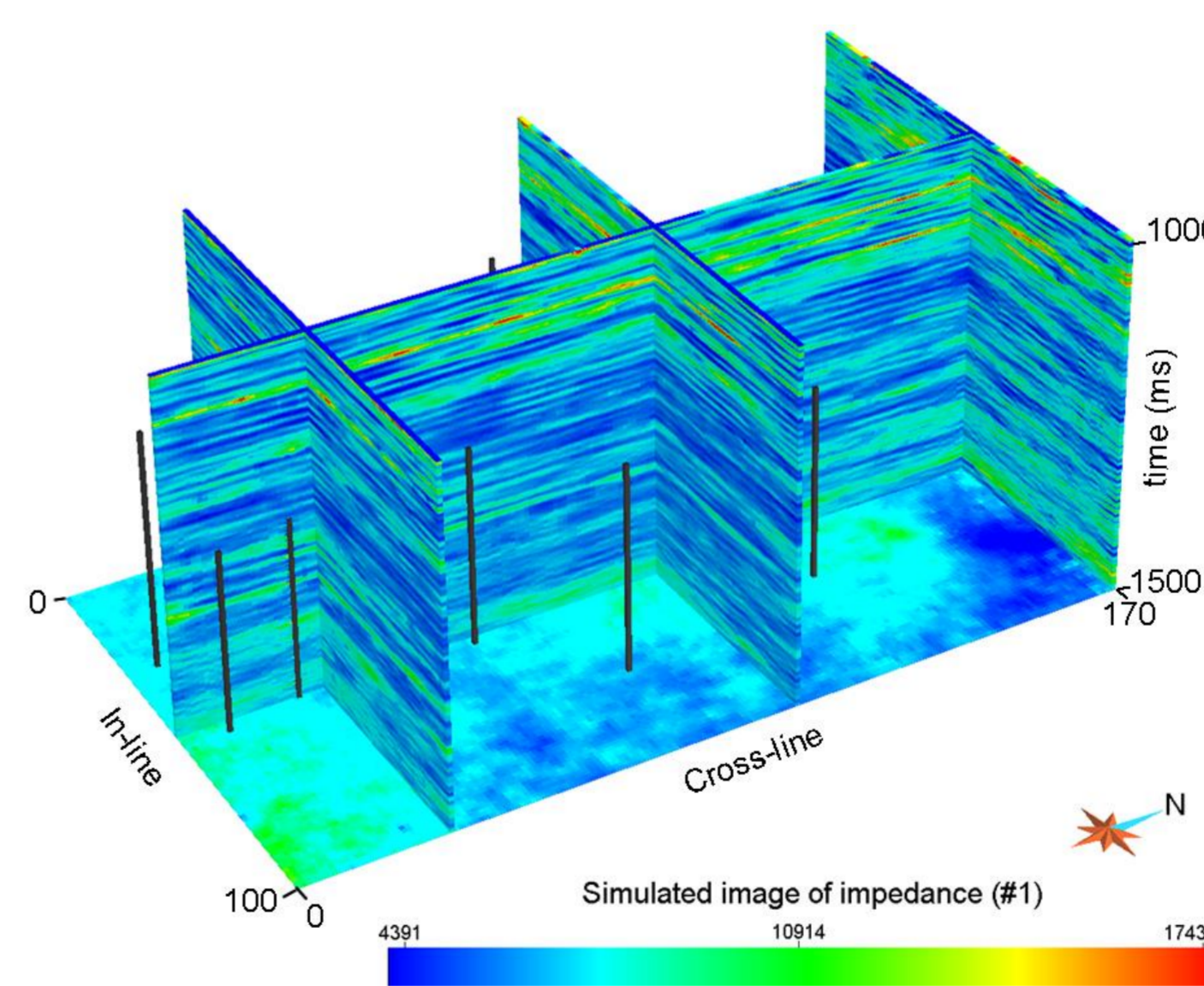
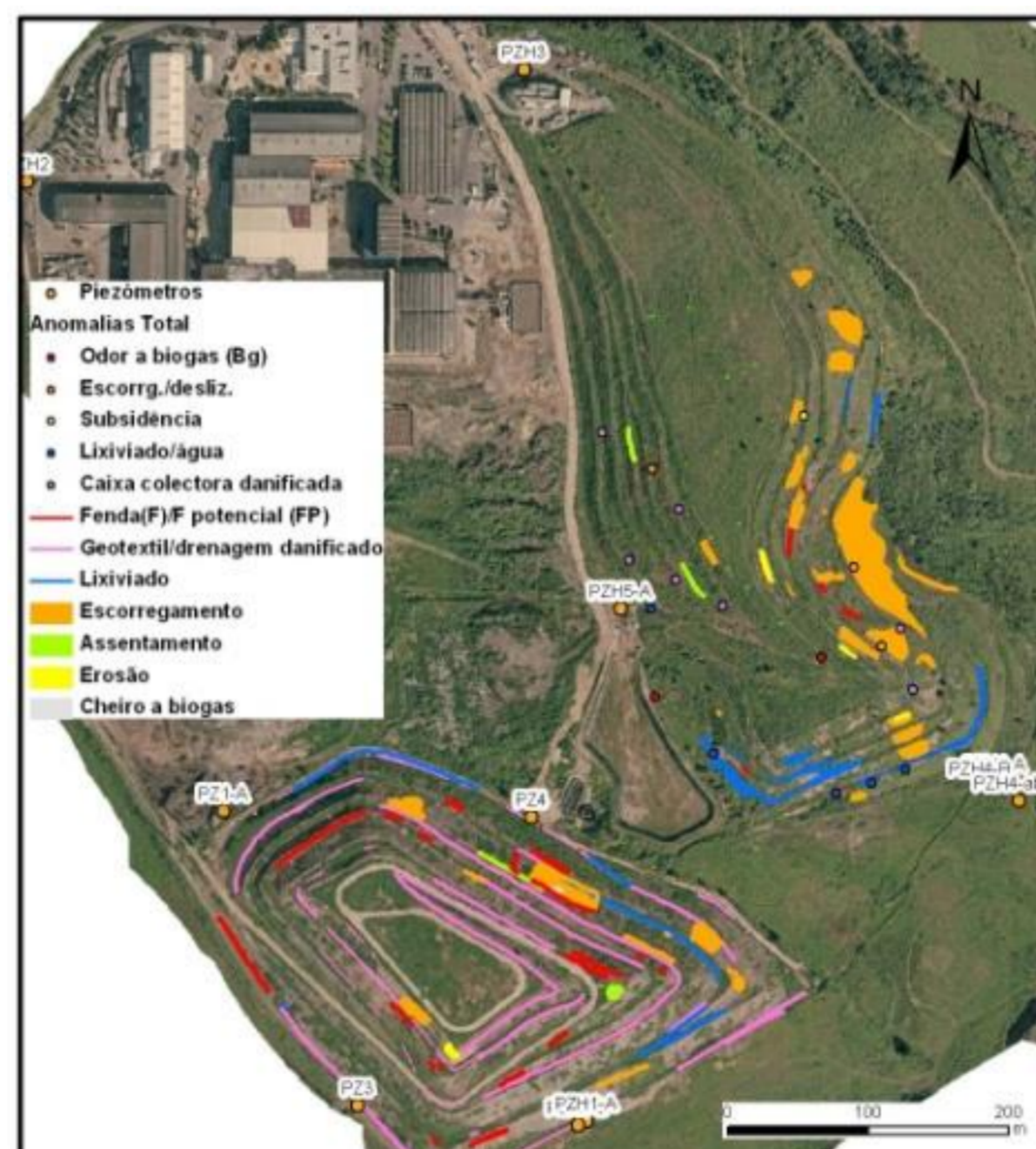
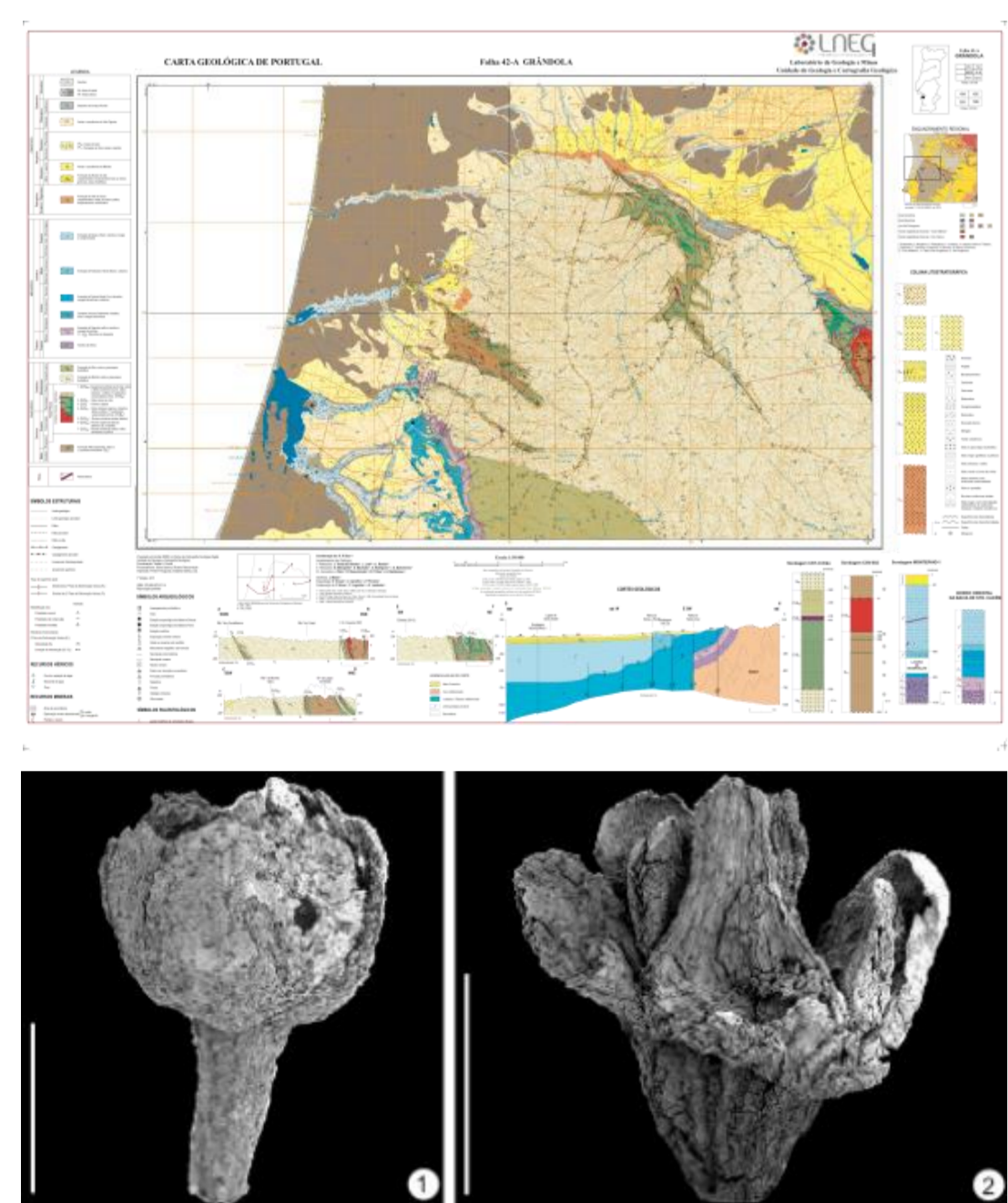
Ana Paula Silva	Miguel Telles Antunes
Ausenda Balbino	Nuno Leal
Fernando Lidon	Octávio Mateus
Fernando Reboredo	Paulo Sá Caetano
João Pais	Paulo Legoinha
Joaquim Simão	Pedro Lamas
José António Almeida	Rogério Rocha
José Carlos Kullberg	Zenaide Silva
Lígia Castro	
Maria Fernanda Pessoa	
Maria Graça Brito	
Maria Manuela Simões	
Martim Chichorro	

Scientific Areas

- Sedimentary Basins, Stratigraphy and Paleontology
- In situ U-Pb geochronology, provenance analysis and paleogeographic reconstructions
- Object 3D based geological models
- Weathering of industrial and ornamental stones
- Georesources prospecting, management, interpretation and modelling
- Engineering geological mapping and slope stability
- Geological mapping
- Geological heritage
- Quantitative environmental geology
- Efficient use of groundwater prospecting, quality, management, exploitation
- Agroforestry and biofortification

Technologies / Facilities

Aralab salt spray chamber S120 from ASCOTT for ageing tests
 ArcGIS licenses, A0 HP DesignJet 755CM plotter
 Atomic absorption spectrometer analyst 300 from Perkin Elmer
 Cation exchange capacity (CEC) by using distillers
 Centrifuges, distilled water machines
 Compression test machine from FormTest Seidner,
 Core drill bench top, Crackmeter, Densimeters
 Discoplan-TS from Struers for lapping of ground samples
 Dynamic penetrometer light and medium (DPL / DPM)
 Fritsch saw for geological rock samples
 HAAKE viscotester Plus from Thermo Electro Corporation
 Ion Chromatograph DIONEX, DX-120; columns IonPac AS14 e AG14
 Ion Chromatograph METROHOM, 761 Compact IC;
 column METROSEP Cation 1-2; Jaw crusher, Marsh funnel viscometer
 Jeol T 330 A Scanning electronic microscope with tracor microprobe
 Micropaleontology, Petrology and Mineralogy laboratory equipments,
 polarizing microscopes, binocular stereoscopes



Recent Projects

- DINOEGGS (2011-2014) – Dinosaur eggs and embryos in Portugal: paleobiological implications and paleoenvironmental settings (PTDC/BIA-EVF/113222/2009)
- GONDWANA (2011-13) Neoproterozoic - lower Paleozoic geodynamic evolution of northern Gondwana revealed by in situ Hf and O isotopic composition and U-Th-Pb dating in zircon populations (SW Iberian Massif) (PTDC/CTE-GIX/110426/2009)
- Modelling and Characterization of Fractured Oil Fields. Project financed by Galp E&P.
- Proposal for the nomination of Arrábida as Mixed World Heritage site (UNESCO) (2012-2014).
- Assessment of soils and groundwater contamination and human health risk analysis (2012-2014) Project financed by Batimétrica; EDP; EGIAMB; Galp E&P.
- Slope stability analysis and geotechnical studies (2012-14) Águas de Portugal; ALMINA; Tratolixo.

Recent Publications

- Charifo, G; ALMEIDA, JA; Ferreira, A (2013) Managing borehole samples of unequal lengths to construct a high-resolution mining model of mineral grades zoned by geological units. Journal of Geochemical Exploration, 132, 209-223.
- Lézin, C; CAETANO, PS; Gonçalves, P; Rey, J; Rocha, F; ROCHA, RB (2012) Biosedimentary disturbances in shallow-water carbonate environments: An example from the Upper Hauterivian in the Lusitanian Basin. Palaeogeography, Palaeoclimatology, Palaeoecology, Amsterdam, vol. 315-316, pp. 24-37.
- Pereira, M.F.; CHICHORRO, M., S.T. Johnston, S.T., Gutiérrez-Alonso, G, Silva, J.B., Linnemann, U., Hofmann, M., Drost, K. (2012). The missing Rhenish Ocean magmatic arcs: Provenance analysis of Late Paleozoic sedimentary clastic rocks of SW Iberia. Gondwana Research, Volume 22, Issues 3-4, Pages 882-891.
- Quental, P; ALMEIDA, JA; SIMÕES, M (2012) Construction of high-resolution stochastic geological models and optimal upscaling to a simplified layer-type hydrogeological model. Advances in Water Resources 39, 18-32.
- Ramalho, J. C., Zlatev, Z., Leitão, A. E., Pais, I. P., Fortunato, A., LIDON, F. C. (2014). Moderate water stress causes differential stomatal and non-stomatal changes on the photosynthetic functioning of Phaseolus vulgaris L. genotypes. Plant Biology 16, 136-146.
- Roque, C; Duarte, H; Terrinha, P; Valadares, V; Noiva, J; Cachão, M; Ferreira, J; LEGOINHA, P; Zitellini, N (2012) Pliocene and Quaternary depositional model of the Algarve margin contourite drifts (Gulf of Cadiz, SW Iberia): seismic architecture, tectonic control and paleoceanographic insights. Marine Geology, 303, 42-62.
- SILVA, Z; SIMÃO, J; Sá, MH; LEAL, N (2013) Rock Finishing and Response to Salt Fog Atmosphere. Global Stone Congress, Trans Tech Publications, Key Engineering Materials, 548, 275-286.
- Soto, R; KULLBERG, JC; Oliva-Urcia, B; Casas-Sainz, AM; Villalain, JJ (2012) Switch of Mesozoic extensional tectonic style in the Lusitanian basin (Portugal): Insights from magnetic fabrics. Tectonophysics 536, 122-135.
- Tschopp, E; MATEUS, O (2013) The skull and neck of a new flagellicaudatan sauropod from the Morrison Formation and its implication for the evolution and ontogeny of diplodocid dinosaurs. Journal of Systematic Palaeontology, 11 (7), 853-888.