

## Solar Energy in Architectural Education

Solar Energy

# why?

Architecture



NYCPEOPLEWATCHER



[marialice.wordpress.com](http://marialice.wordpress.com)

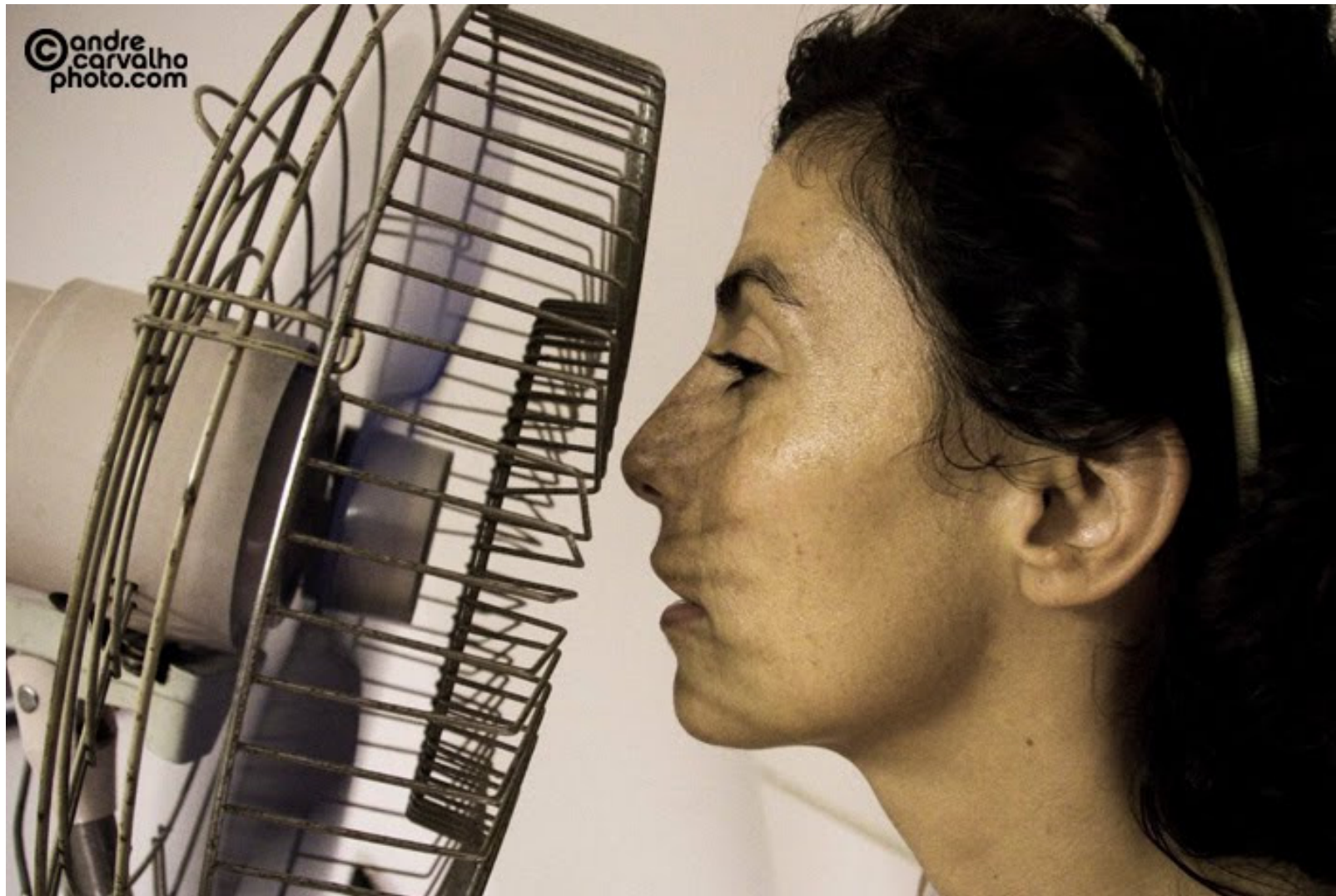


[emilezier.blogspot.com](http://emilezier.blogspot.com)

# comfort



[the-universality-of-cheese.blogspot.com](http://the-universality-of-cheese.blogspot.com)







<http://slowmuse.wordpress.com>

**heat** cold radiation wind humidity

climate

κλιμα

(*klima* = inclination)



this is why..

<http://www.swpc.noaa.gov>

Solar Energy

# how?

Architecture

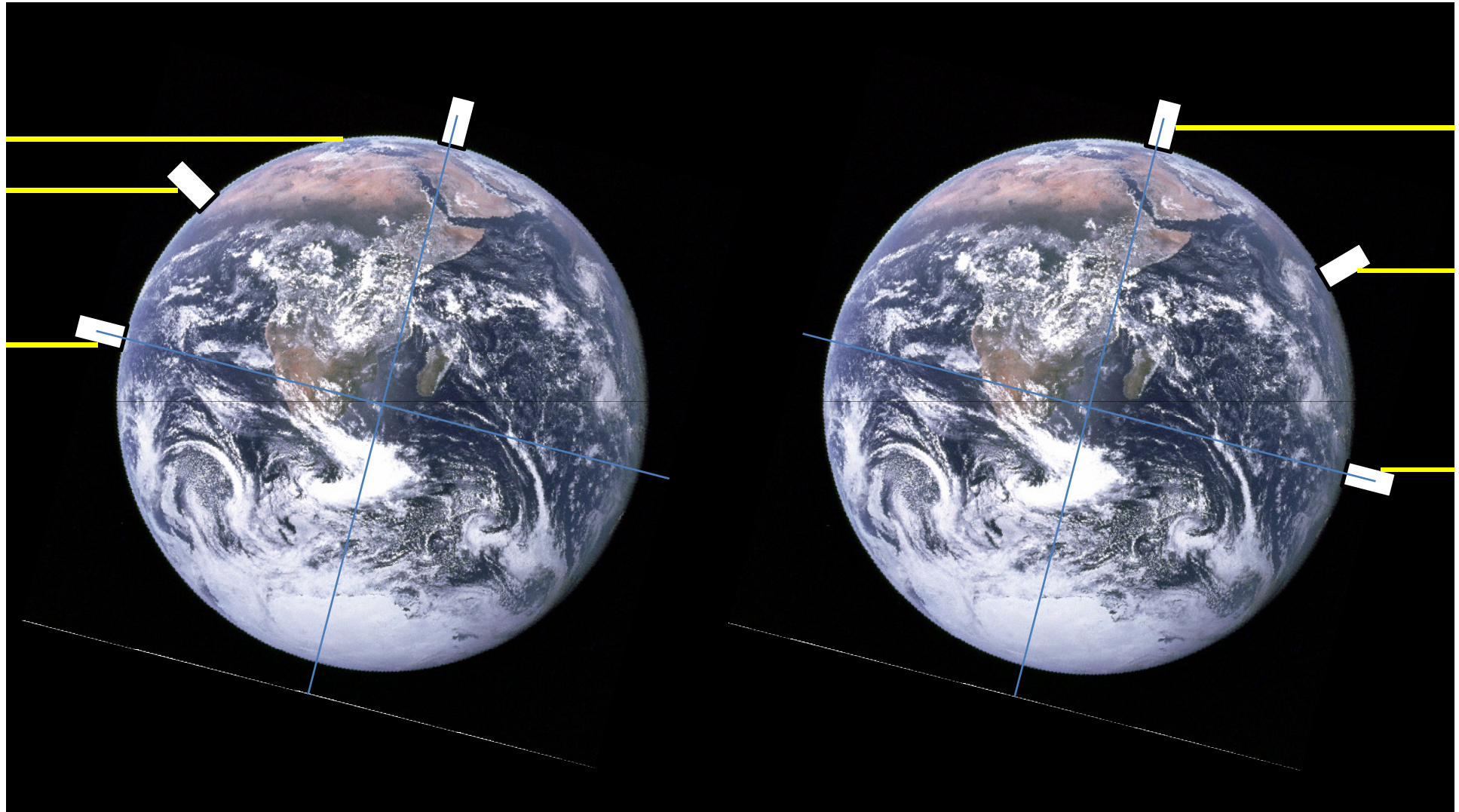
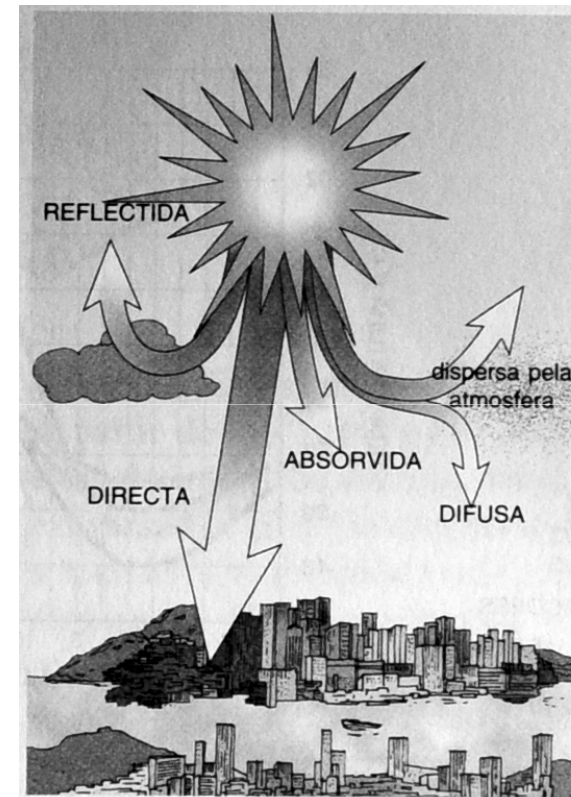
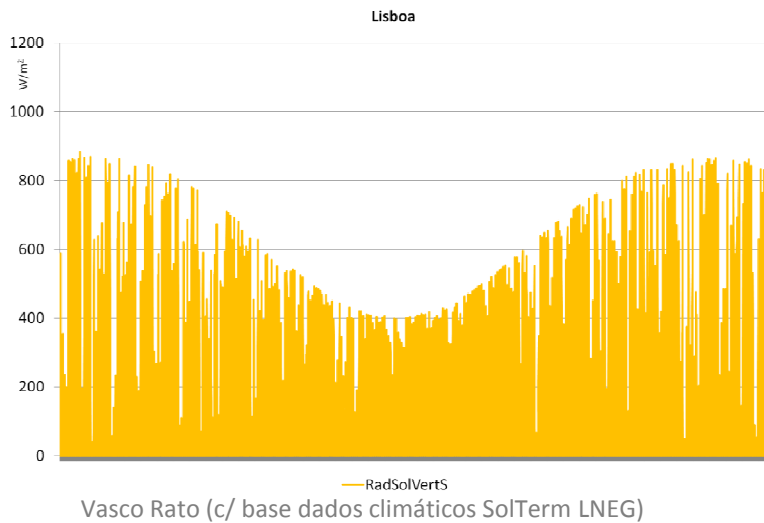
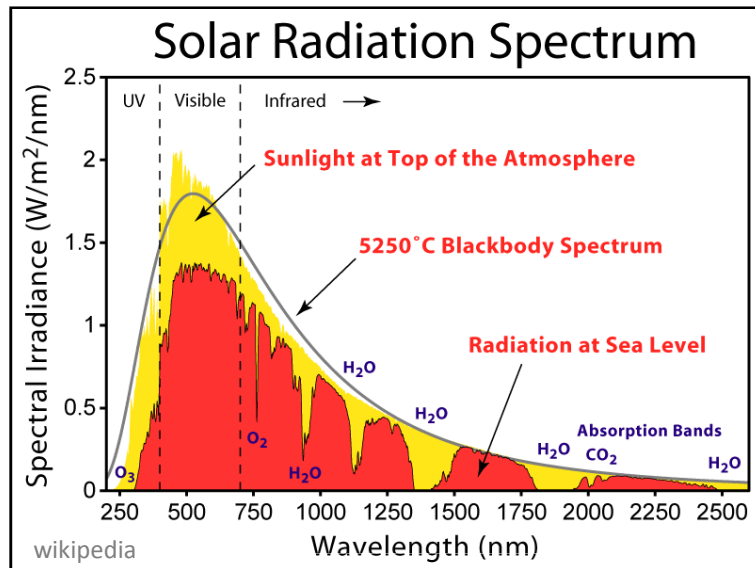


photo: [http://upload.wikimedia.org/wikipedia/commons/9/97/The\\_Earth\\_seen\\_from\\_Apollo\\_17.jpg](http://upload.wikimedia.org/wikipedia/commons/9/97/The_Earth_seen_from_Apollo_17.jpg)



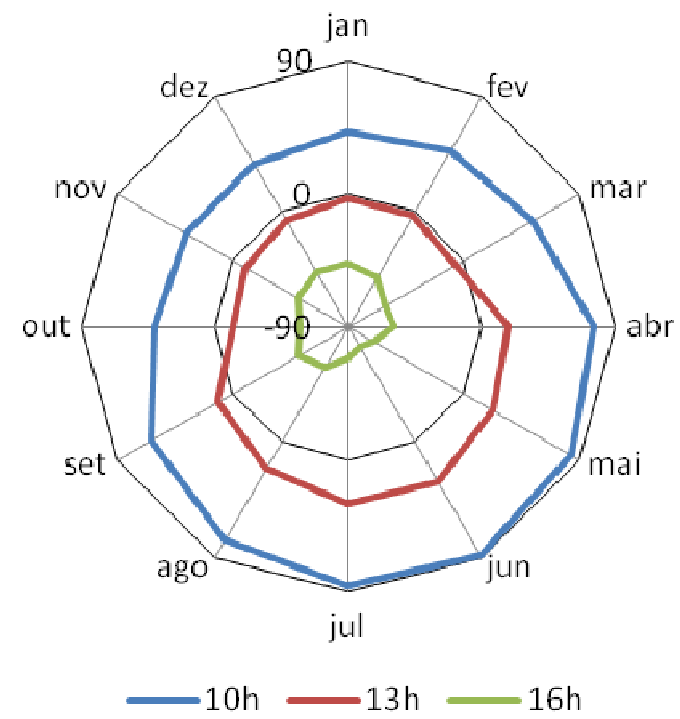
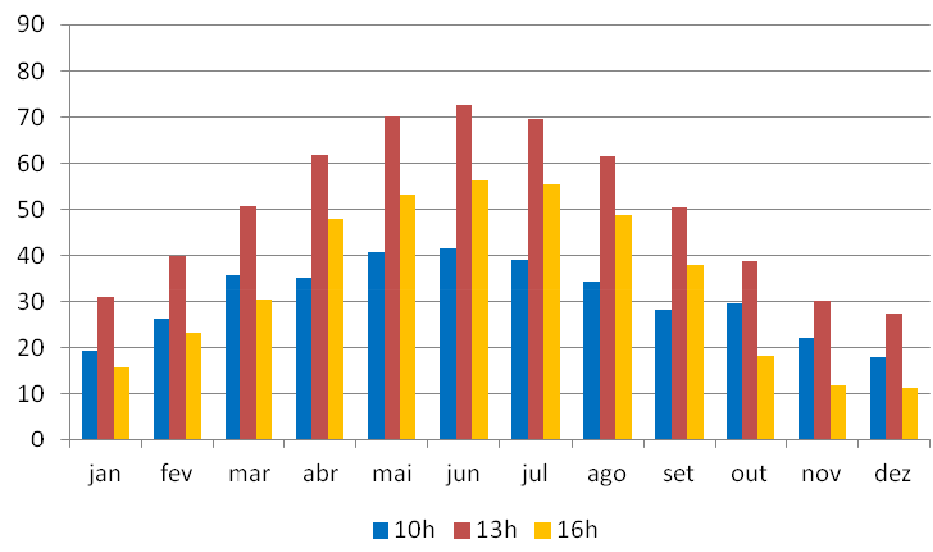
CANHA da PIEDADE *et al*, 2000

$$\delta = 23,45 \cdot \text{sen} \left( 360 \cdot \frac{284 + N}{365} \right)$$

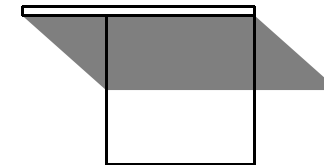
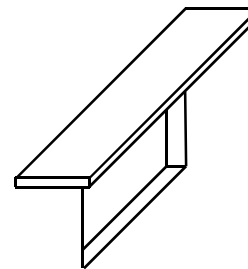
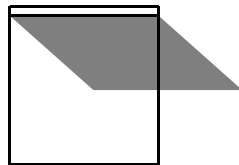
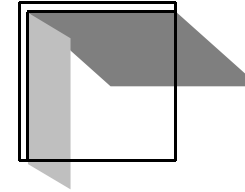
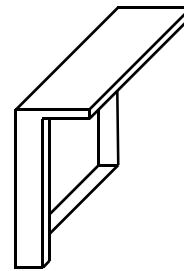
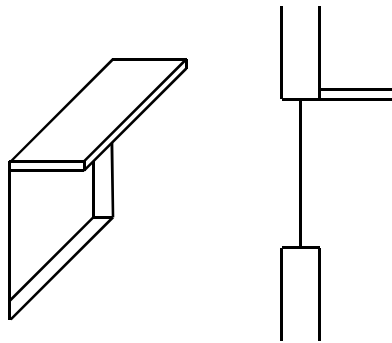
$$H = 15 \cdot [12 - (t \pm 0,0667 \cdot \text{long})]$$

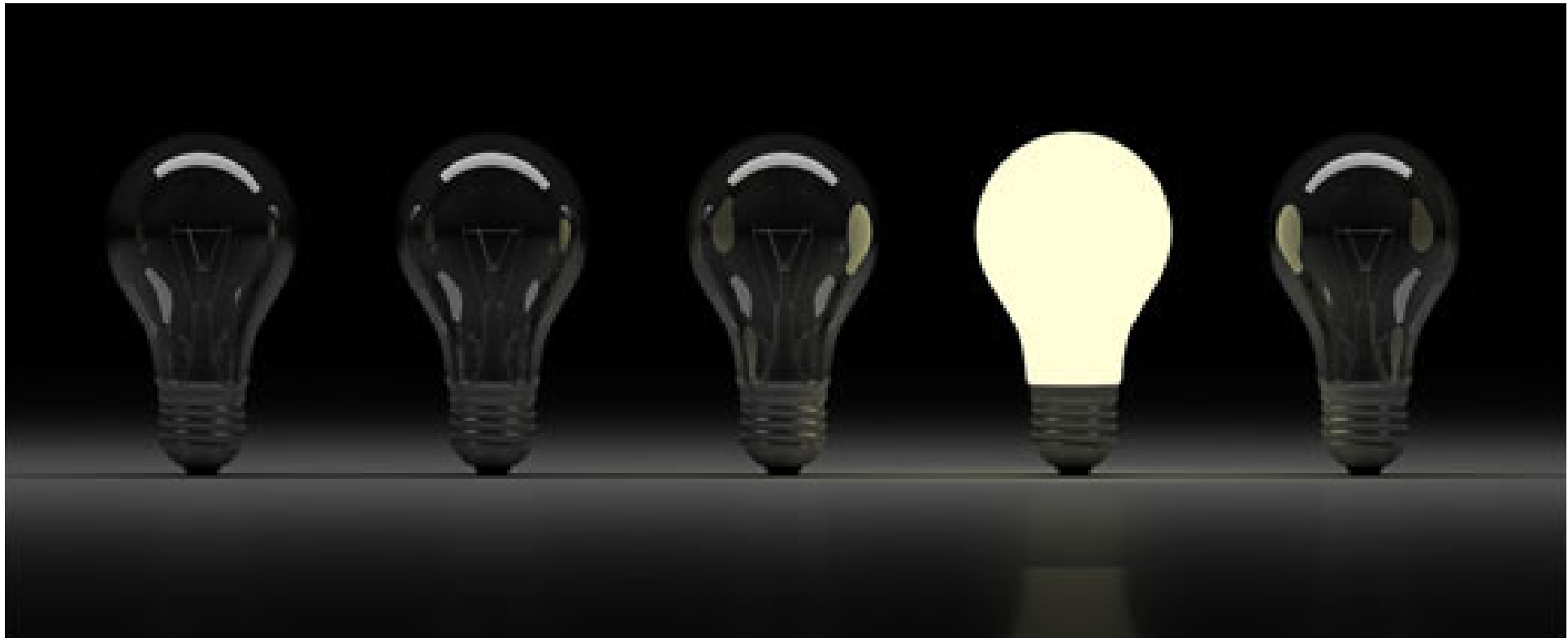
$$h = \arcsen(\text{sen } L \cdot \text{sen } \delta + \cos L \cdot \cos \delta \cdot \cos H)$$

$$A = \arccos \left( \frac{\text{sen } L \cdot \text{sen } h - \text{sen } \delta}{\cos L \cdot \cos h} \right)$$

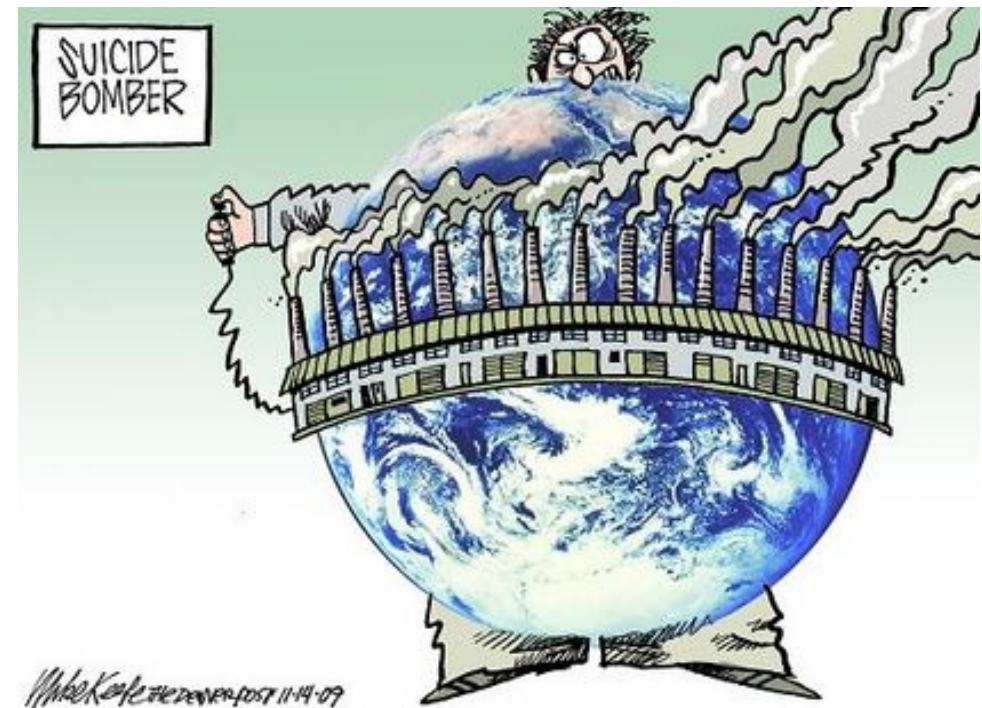






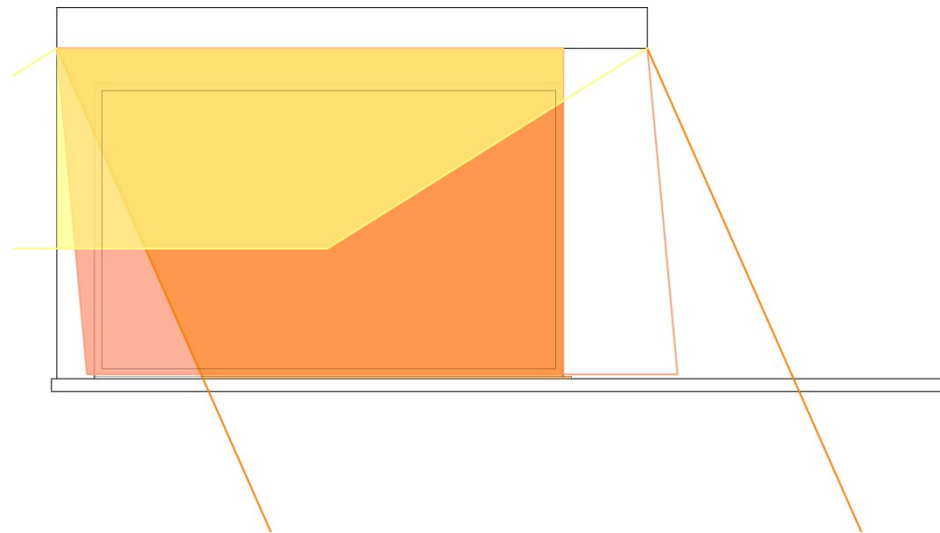
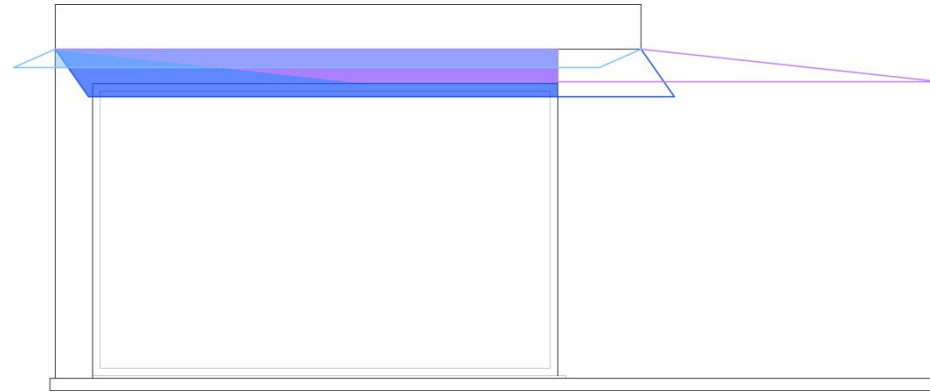


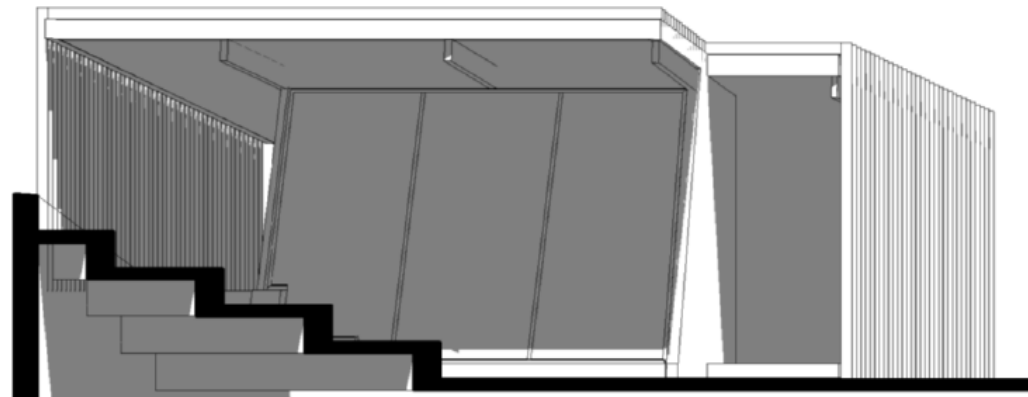
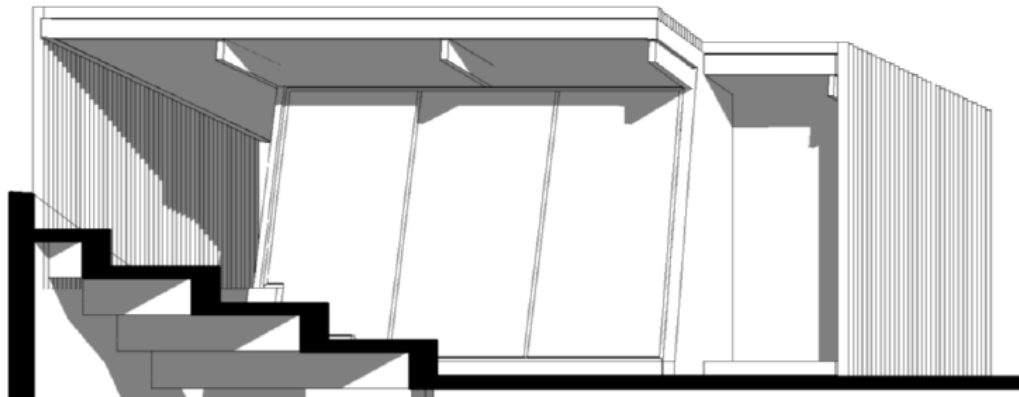
[www.failure101.org](http://www.failure101.org)





Pedro Cabrito, Edifício Solar XXI, LNEG





**teachers**

**future...**

**talent + knowledge**



## Solar Energy in Architectural Education

thank you...